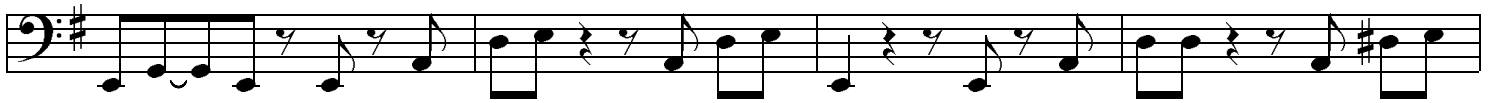


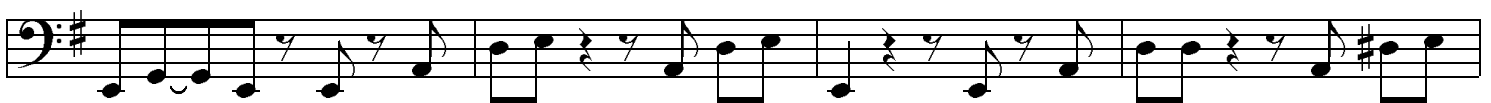
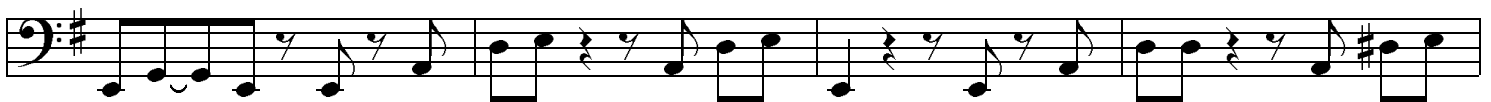
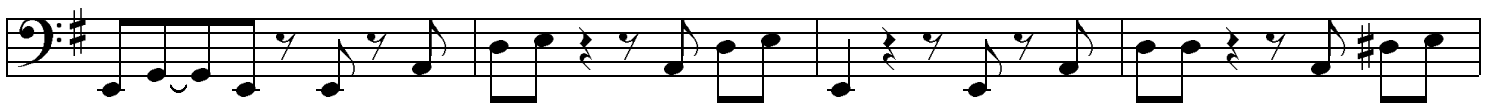
The Loner - Bass

Strophe 1

Mit Plektrum, Saiten mit Handballen der Zupfhand leicht abdämpfen



Strophe 2
Mit Plektrum, Saiten nicht dämpfen



Refrain 1



Strophe 3

Strophe 3 consists of four staves of music in bass clef, G major. The first staff begins with a double bar line and a key signature change to G major (one sharp). The melody is primarily composed of eighth and quarter notes, with some rests. The second and third staves continue the melodic line with similar rhythmic patterns. The fourth staff concludes the section with a double bar line.

Refrain 2

Refrain 2 consists of three staves of music in bass clef, G major. The first staff begins with a double bar line and a key signature change to G major. It features a melodic phrase with eighth and quarter notes. The second and third staves continue this phrase, ending with a double bar line.

Refrain 3

Refrain 3 consists of three staves of music in bass clef, G major. The first staff begins with a double bar line and a key signature change to G major. It features a melodic phrase with eighth and quarter notes. The second and third staves continue this phrase, ending with a double bar line.

Strophe 4 - Variation

Strophe 4 - Variation consists of one staff of music in bass clef, G major. It begins with a double bar line and a key signature change to G major. The melody is composed of eighth and quarter notes, ending with a double bar line.



Refrain 4

